

# RESTAURI & COSTRUZIONI

*Appartamenti . Ville . Casali . Borghi*



Castello di  
**Quercegrossa**

Monteriggioni (Siena) - Tuscany - Italy

# Castello di Quercegrosza

## PRESENTATION

Situated on a ridge in the Chianti Classico countryside, Querciagrossa Castle gave rise to the village of the same name, located just 5 km from Siena and 60 km from Florence. Already mentioned in documents dating back to 1111, the Castle has very ancient origins and, given its dominant position from the beginning, played a crucial role in the defensive line of the Republic of Siena against the Florentine threat.

The entire property covers an area of approx. 25 hectares of land, dedicated to arable crops, olive groves, vineyards (approx. 1.5 ha Chianti Classico) and woodland. The hamlet consists of 5 buildings with a total area of approx. 1800 sqm plus 4000 sqm of surrounding parkland.



**Distances:**

**5 km** from the city of Siena

**17 km** from the Chianti hills and the  
main wineries and castles

**43 km** from the Val D'Orcia,  
Pienza and Montalcino

**62 km** from the centre of Florence and airport

**80 km** from the main resorts on the Tuscan coast

• Pisa

• Firenze

**Castello di  
Quercegrossa**

• Siena

• Montalcino













*The current state*







*The vision*









*The vision*



# Castello di Quercegrosza

## THE PROJECT

Apartament 2

Apartament 3

Apartament 4

Apartament 5

Apartament 6

Apartament 7

Apartament 8

CLUB HOUSE

Given its strategic location and the particularly valuable and historic nature of the buildings, the Borgo lends itself well to both residential and tourist-receptive development. The current project envisages the valorisation of the entire complex and the fractioning into 8 luxury flats, each with independent entrance and private garden.

For the greater benefit of the residences, a portion of common parkland will be dedicated, where a panoramic swimming pool, a clubhouse dedicated to relaxation and wellness, and an evocative patio are planned.

The entire renovation will be aimed at enhancing and preserving the historical connotations of the buildings, devoting particular care and attention to the choice of fine finishes.

Below are the plans of the individual units with the main textures and renderings for reference.











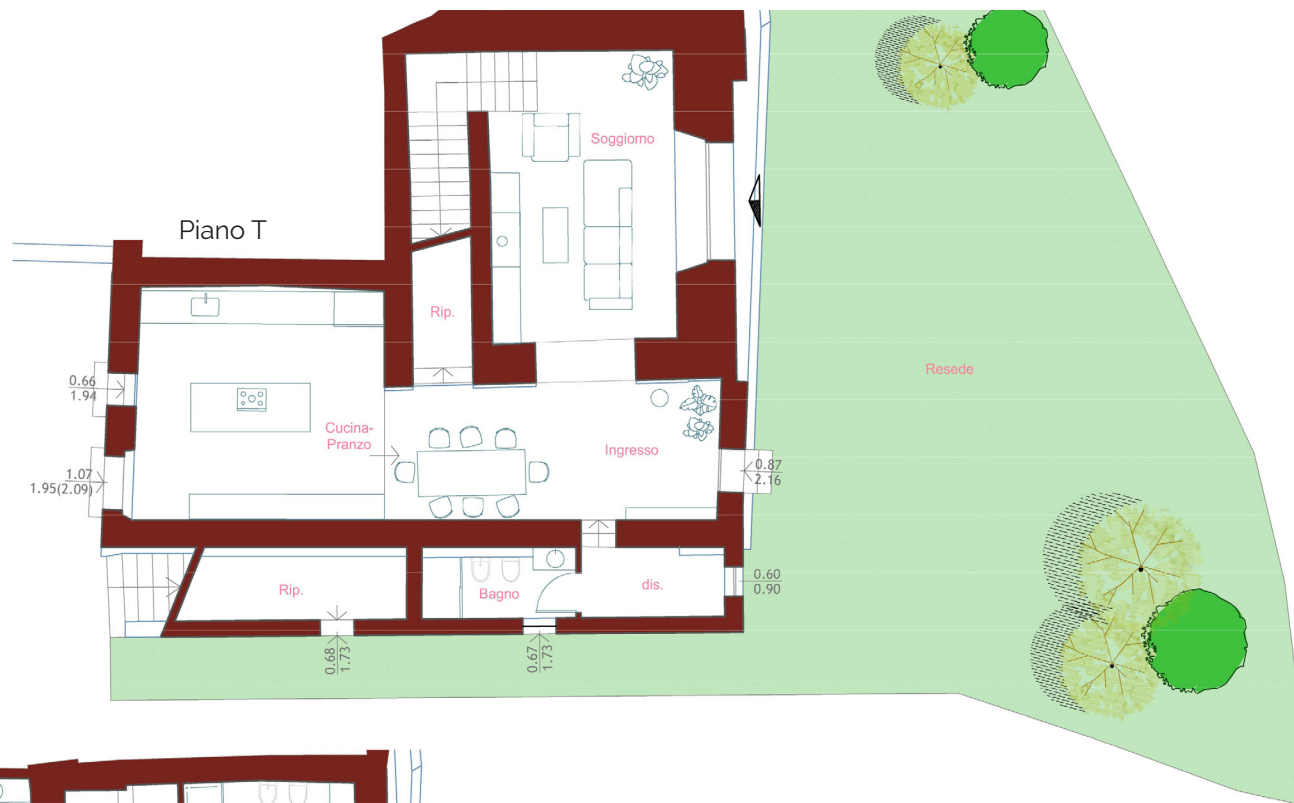
## Apartament 1

apartament  
**252 mq**

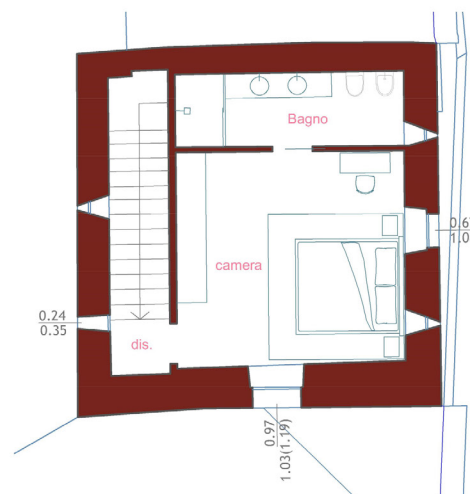
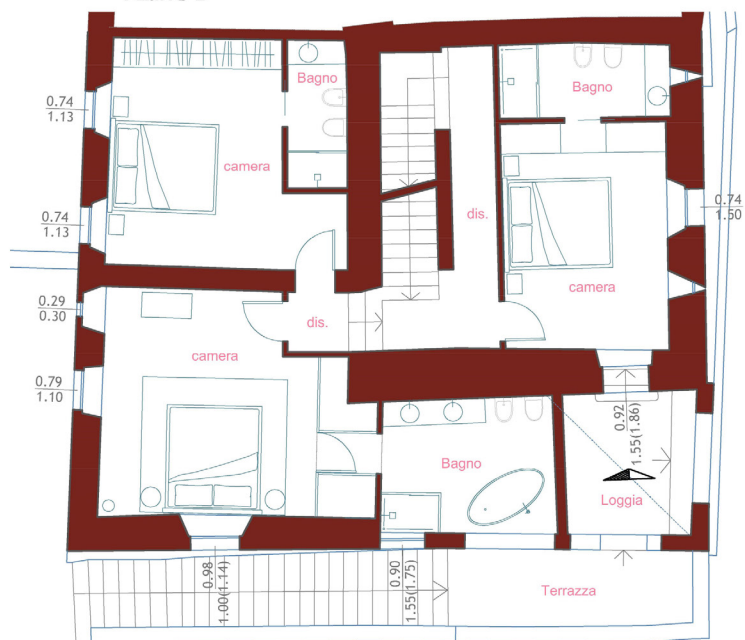
loggias  
**7 mq**

terraces  
**7 mq**

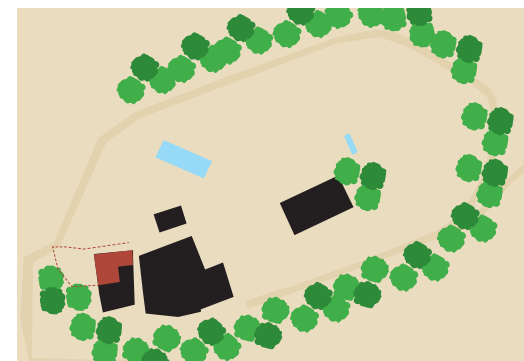
courtyard  
**148 mq**



Piano 1



Piano 2











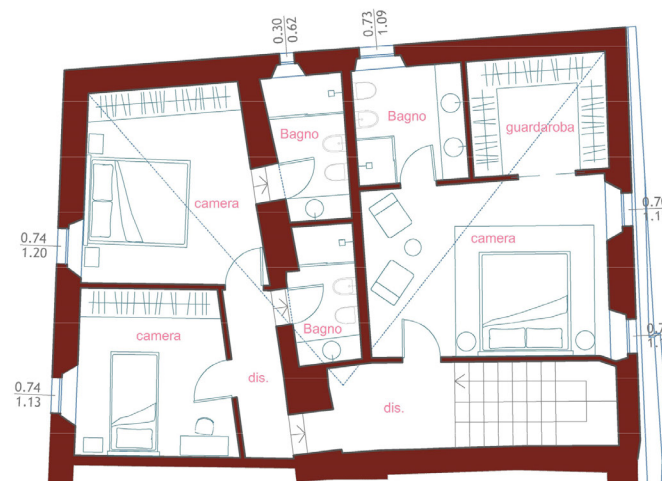
## Flat 2

flat  
**211 mq**

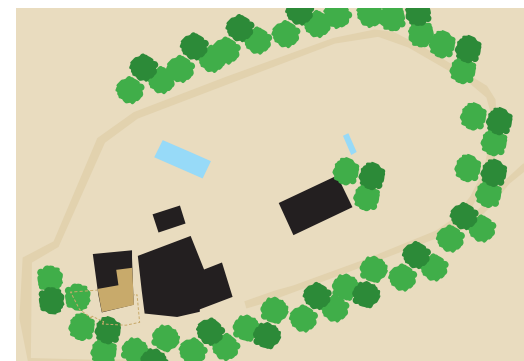
resede  
**123 mq**



Piano T



Piano 1





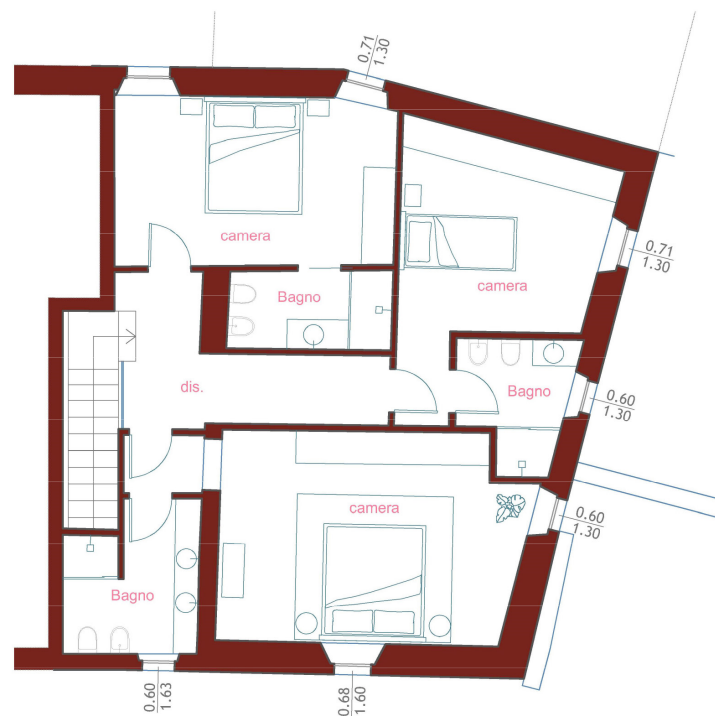
## Flat 3

flat  
**195 mq**

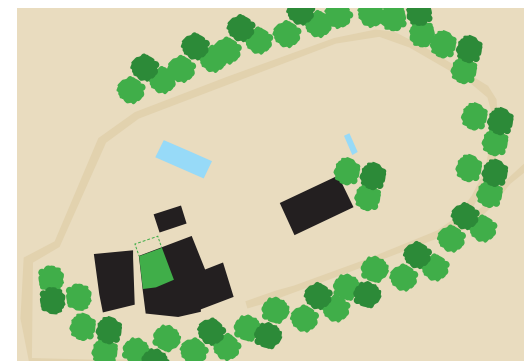
resede  
**41 mq**



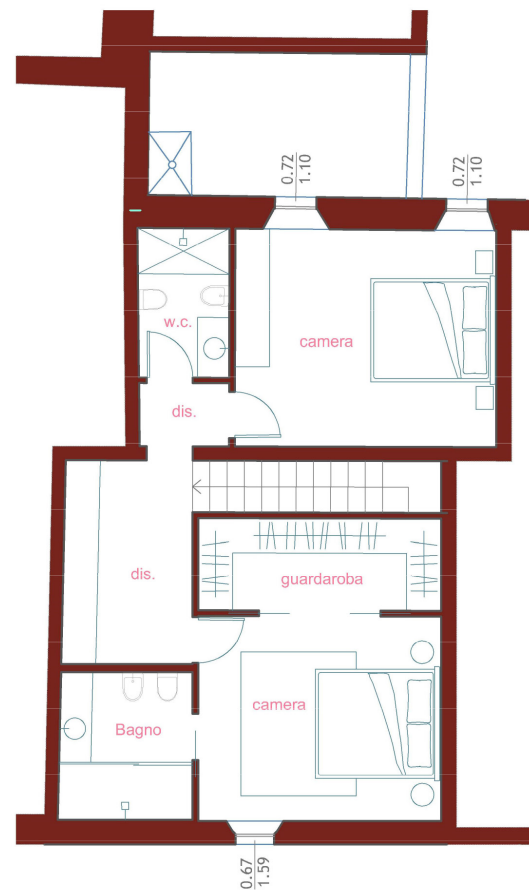
Piano T



Piano 1





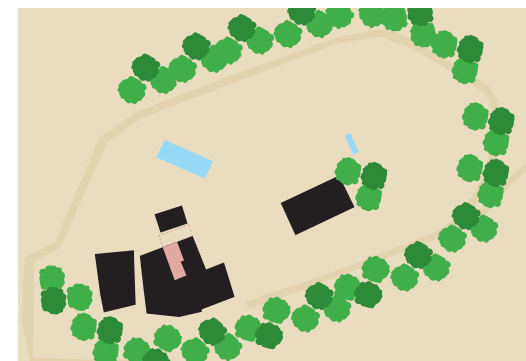


Flat 4

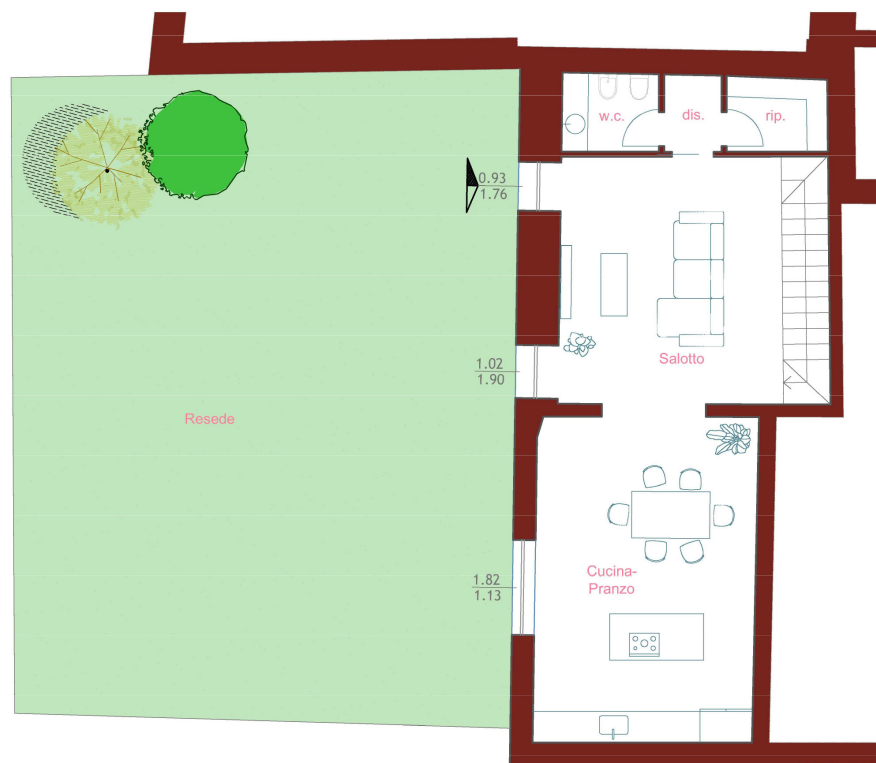
flat  
**139** mq

resede  
**58** mq

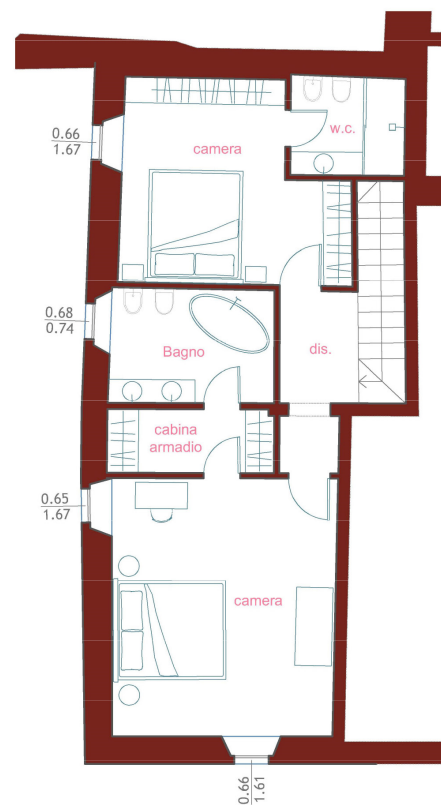
patio  
**11** mq







Piano T

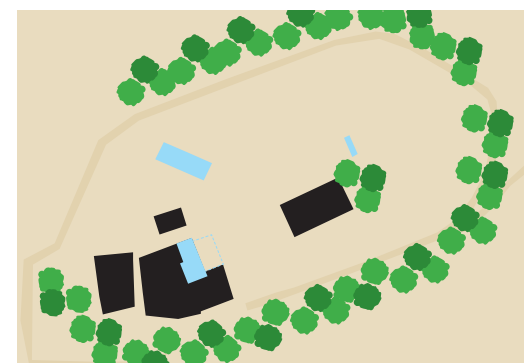


Piano 1

## Flat 5

flat  
**136 m<sup>2</sup>**

resede  
**118 m<sup>2</sup>**





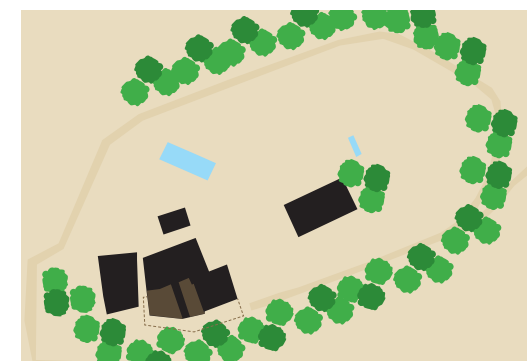
## Flat 6

flat  
**151 m<sup>q</sup>**

courtyard  
**47 m<sup>q</sup>**

porch  
**21 m<sup>q</sup>**

resede  
**212 m<sup>q</sup>**



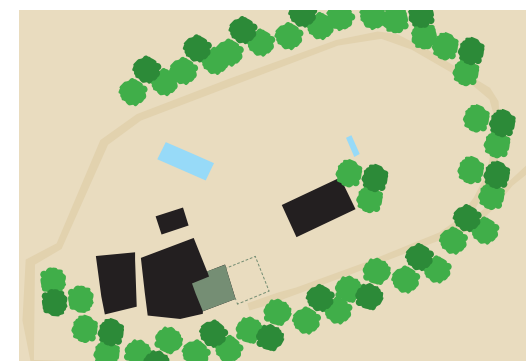
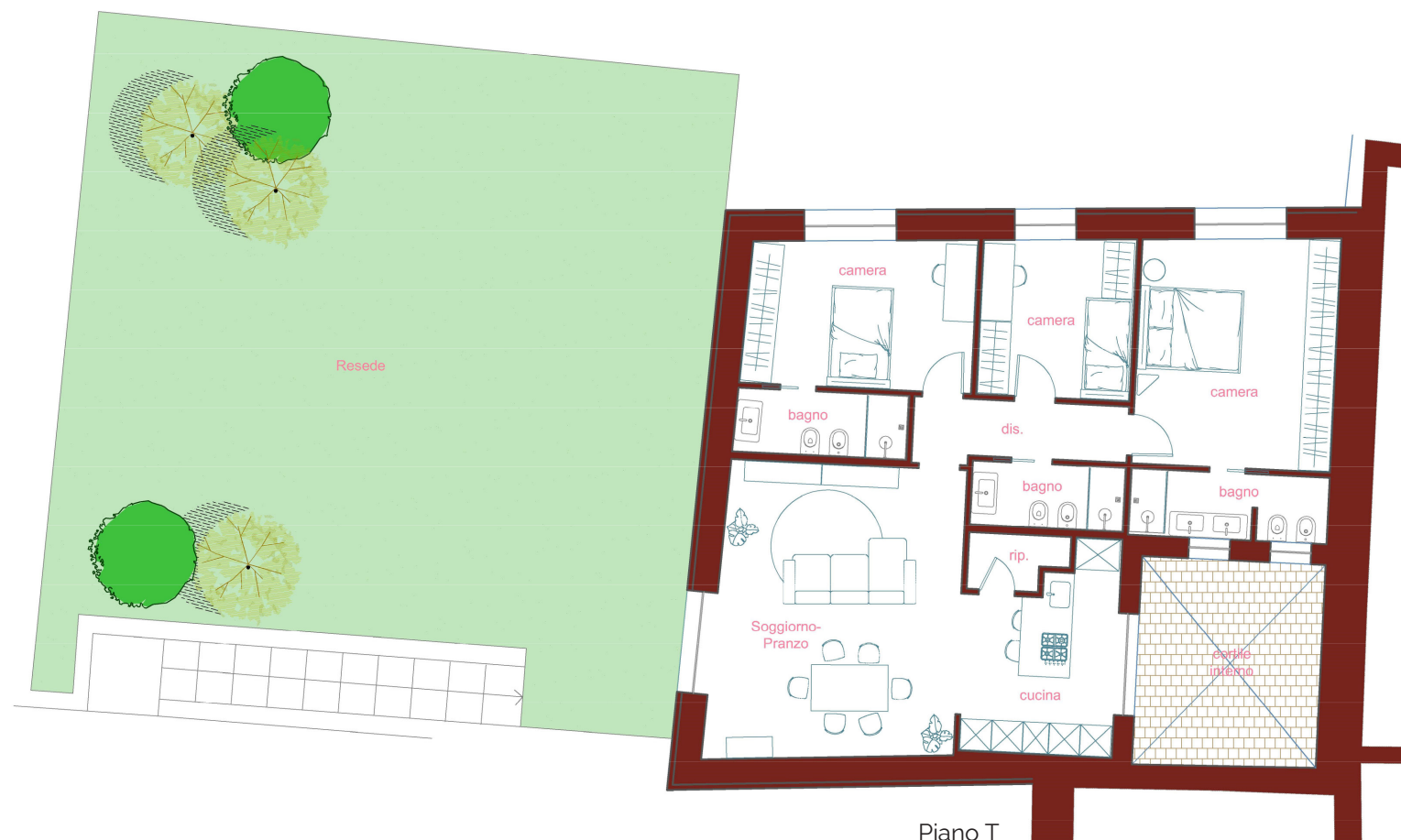


## Flat 7

flat  
**115** mq

courtyard  
**14** mq

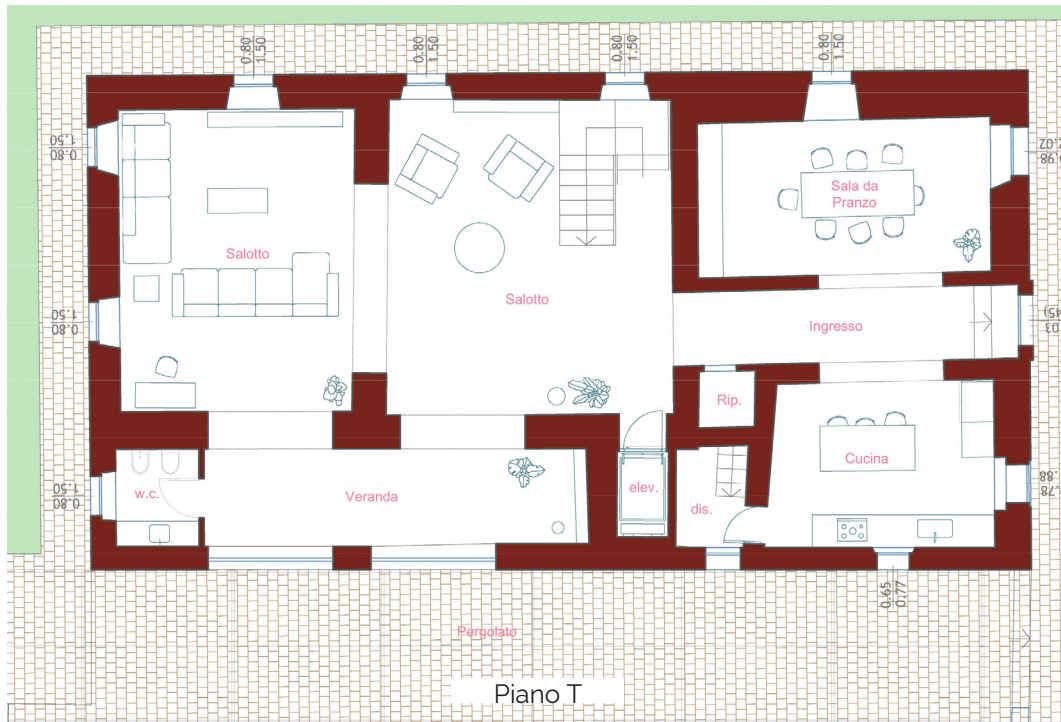
resede  
**160** mq









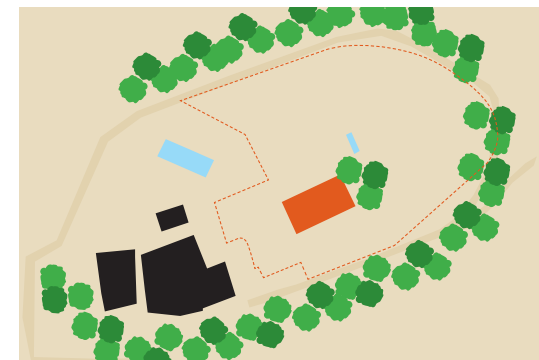


**Flat 8**

flat  
**356 mq**

resede  
**5300 mq**

**privat  
pool**













CLUB HOUSE





PISCINA



Pool





*Exclusivity in the heart of Tuscany*



# RESTAURI & COSTRUZIONI

*Appartamenti . Ville . Casali . Borghi*

## Castello di **Quercegrossa**

Monteriggioni (Siena) - Tuscany - Italy